

Oxford Retention Basin

Flood Protection Multiuse Enhancement Project



COUNTY OF LOS ANGELES
DEPARTMENT OF PUBLIC WORKS



Presented by
Greg Jaquez, P. E.
Associate Civil Engineer
Watershed Management Division

March 2009

Oxford Retention Basin



Oxford Basin Ownership

- County of Los Angeles
- Los Angeles County Flood Control District

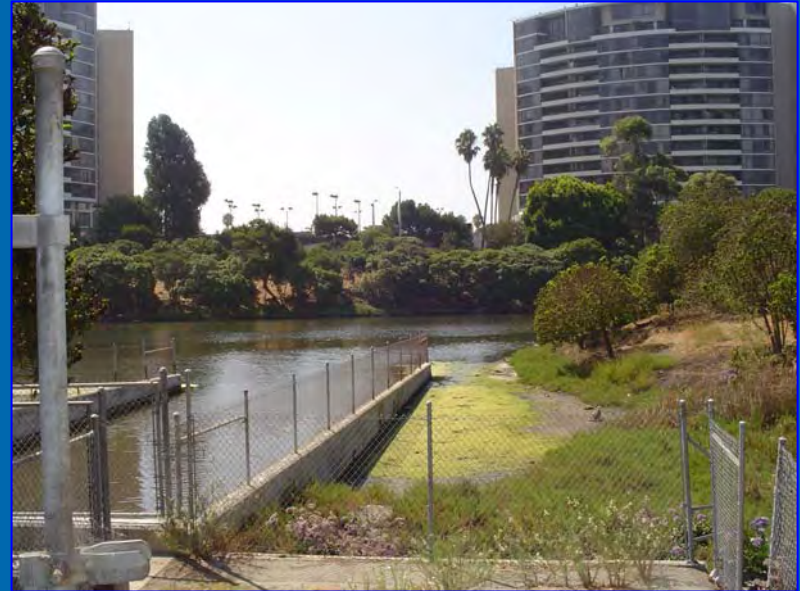
Stakeholders

- County of Los Angeles
 - Department of Beaches & Harbors
 - Department of Public Works
- City of Los Angeles
- City of Culver City
- Caltrans

Oxford Retention Basin

Focus Areas

- Flood Protection
- Water Quality



- Aesthetics
- Passive Recreation
- Operation and Maintenance

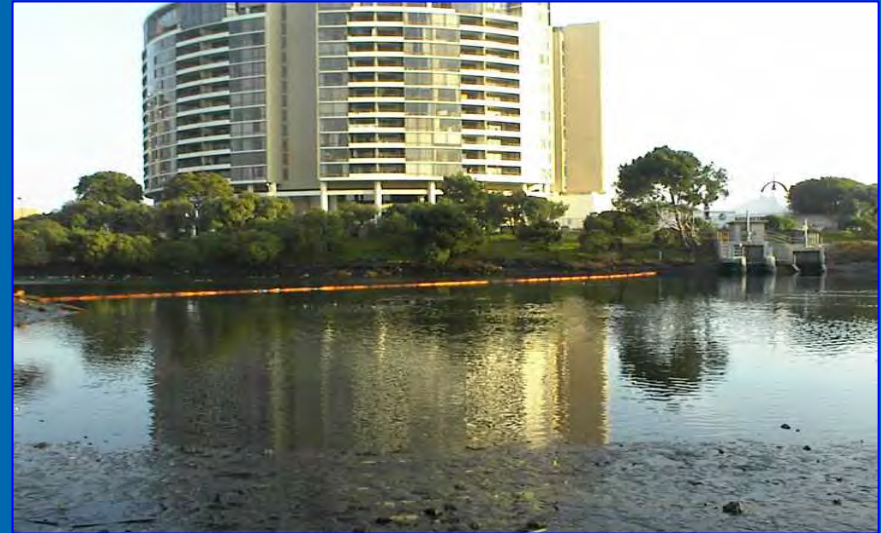
Oxford Retention Basin

Flood Protection Multiuse Enhancement Project

Flood Protection

→ Concerns

- Accumulation of sediment
- Reduced retention capacity
- Flooding



→ Proposed Solution

- Excavate and remove deposited materials
- Construct relief drain along Oxford Avenue and upgrade Oxford Pump Plant

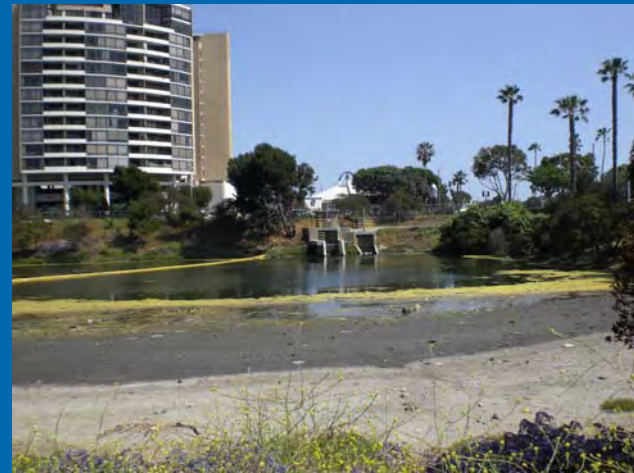
Oxford Retention Basin

Flood Protection Multiuse Enhancement Project

Water Quality

→ Concerns

- ❑ Oxford Retention Basin discharges into Basin E
 - Bacteria
 - Toxics



→ Possible Solutions

- ❑ Water and Sediment Quality Study
- ❑ Bioremediate existing sludge and sediments
- ❑ Excavate and remove of sediments
- ❑ Re-design basin for sediment control during storms
- ❑ Implement Best Management Practices (BMPs)
 - Upgraded Trash Collection Devices
 - Water Quality Treatment Devices



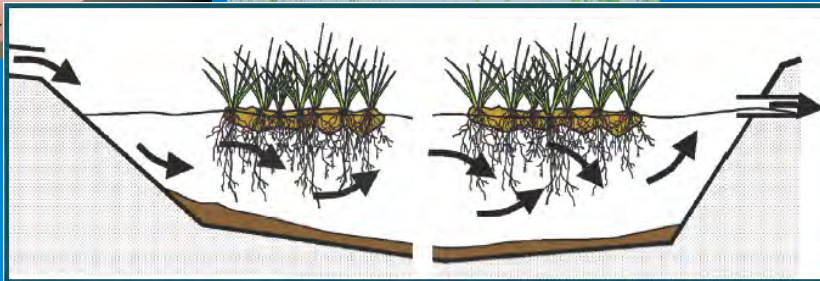
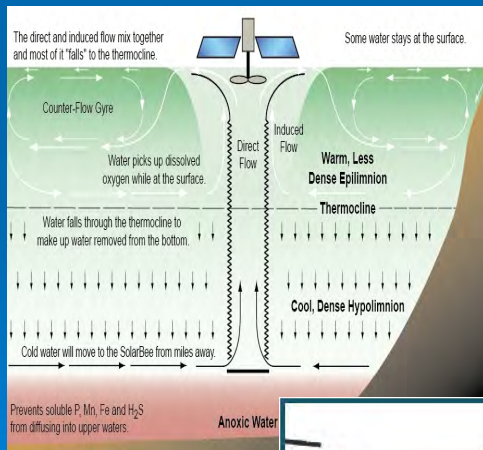
Oxford Retention Basin

Flood Protection Multiuse Enhancement Project

Proposed Technology

→ Concerns

- Dry weather - stagnant oxygen-deprived water
 - Foul odors
 - Sludge build-up
 - Algae
 - Bacterial growth and toxics accumulation
- Wet weather – untreated stormwater runoff



→ Proposed Solutions

- Bioremediation
- Mechanical Circulation
- High Volume Aeration
- Treatment Wetland
- Sediment Settling Basins
- Disinfection System

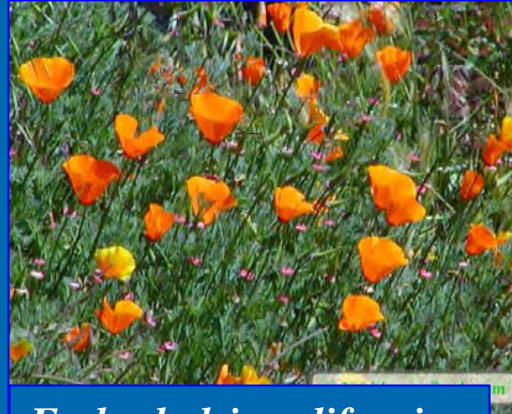
Oxford Retention Basin

Flood Protection Multiuse Enhancement Project

Aesthetics

→ Concerns

- Eyesore
- Non-native plants



Eschscholzia californica



→ Proposed Solutions

- Landscape with native trees and shrubs
- Ornamental steel perimeter fencing
- Observation decks and benches
- Interpretative signage

Oxford Retention Basin

Flood Protection Multiuse Enhancement Project

Passive Recreation

→ Concerns

- ❑ Limited existing recreational amenities
- ❑ Lack of separate facilities for bicyclists and pedestrians
- ❑ Lack of pedestrian connectivity



→ Proposed Solutions

- ❑ Separate walking/jogging path around perimeter of basin
- ❑ Observation decks and benches

Oxford Retention Basin

Flood Protection Multiuse Enhancement Project

Operation and Maintenance

→ Concern

- Trash in basin
- Sediment control



→ Proposed Solutions

- Construct a boat landing to access basin banks for trash collection
- Upgrade trash collection devices at storm drain outlets
- Confine sediment to more manageable areas

Oxford Retention Basin

Flood Protection Multiuse Enhancement Project

Project Concept



Oxford Retention Basin

Flood Protection Multiuse Enhancement Project

Project Funding Sources



- Los Angeles County Flood Control District
- County of Los Angeles
- Marina del Rey Watershed tributary agencies
- Grant opportunities



Oxford Retention Basin

Flood Protection Multiuse Enhancement Project

Cost Estimate

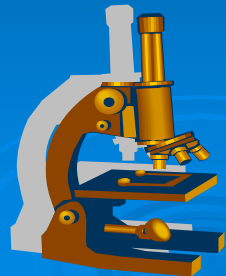
Basin Excavation and Construction	\$5,000,000
Oxford Avenue Relief Drain and Oxford Pump Plant Upgrade	\$3,600,000
Water Quality Improvements	\$800,000
Multiuse Landscape and Recreation Enhancement	\$4,100,000
TOTAL	\$13,500,000

Oxford Retention Basin

Flood Protection Multiuse Enhancement Project

Project Schedule

Project Concept & Outreach	Ongoing
Design and Permitting	July 2012
Award Construction Contract	January 2013
Construction Start	April 2013
Construction Completion	April 2014



Oxford Retention Basin

Flood Protection Multiuse Enhancement Project

Thank you.

QUESTIONS?

**County of Los Angeles
Department of Public Works**

